



ACTUAL SIZE



Our most versatile tape light in our portfolio, BLAZE 24V LED Tape Light is perfect for accent and task lighting with its vast selection of color temperatures and exceptional lumen output. Featuring a superior 90+ CRI rating for excellent light quality and the ability to run up to 33 linear feet on a single class 2 power source, BLAZE 24V LED Tape Light is ideal for commercial and residential applications.

## FEATURES

- Bright task lighting
- Class 2 linear runs up to 33ft.
- 90+ CRI
- Cuttable every 2 inches
- 3M™ 55280 Adhesive backing

## QUICK SPECS

<b>Voltage</b>	24VDC
<b>Wattage</b>	2.88W / ft.
<b>Max. Run</b>	33 ft.
<b>Dimensions</b>	0.31 x 0.1 in. (W x H)
<b>Field Cuttable</b>	~2 in. (50mm)
<b>LED Chips</b>	36 / ft.
<b>Certification</b>	UL Listed 2108
<b>Warranty</b>	12-Year Warranty

Visit the product page at [www.DiodeLED.com](http://www.DiodeLED.com) for installation guides, .IES files, voltage drop charts, and LM-79 reports.

ITEM #	CCT (KELVIN) <sup>1</sup>	CRI	LUMENS <sup>2</sup> / FT.
DI-24V-BL24-90**	2400K	95	179
DI-24V-BL27-90**	2700K	93	197
DI-24V-BL28-90**	2850K	92	209
DI-24V-BL30-90**	3000K	97	202
DI-24V-BL33-90**	3300K	94	207
DI-24V-BL35-90**	3500K	94	207
DI-24V-BL38-90**	3800K	94	224
DI-24V-BL42-90**	4200K	93	228
DI-24V-BL44-90**	4400K	92	230
DI-24V-BL50-90**	5000K	93	226
DI-24V-BL63-90**	6300K	94	223

\*\* - Substitute with **16** for 16.4 ft spool, **33** for 33 ft. spool, **100** for 100 ft. spool, or **400** for 400ft. spool (400 ft. only available in 2700K, 3000K, and 3500K). 400ft. spools have a diameter of 36" Ex: DI-24V-BL27-80**100** = Blaze 2700K 100ft. Spool

Footnotes 1 & 2 see page 2.



Item # \_\_\_\_\_  
Project \_\_\_\_\_

## SPECIFICATIONS

- Input: 24VDC Constant Voltage
- Power Consumption / ft.: 2.88W / 120mA
- LED Chip Type: Epistar 3528 SMD Chip
- LED Chip Beam Angle: 120°
- LED Chips / ft.: 36
- Dimmable: Yes
- Luminous Efficacy<sup>3</sup> (lm/w): 62~79
- Mounting<sup>4</sup>: 3M™ 55280 Adhesive
- Field Cuttable: ~ 2 in. (50mm)
- Maximum Run<sup>5</sup>: 33 ft.
- Connections<sup>6</sup>: 3 ft. Female DC plug on end. 3 ft. hard-wire lead opposing end. Leads: UL 2464 20/2 AWG
- Ambient Temp<sup>7</sup>: -4 ~ 122°F (-20 ~ 50°C)
- Operating Temp<sup>8</sup>: -4 ~ 176°F (-20 ~ 80°C)
- Environment<sup>9</sup>: Indoor / dry location
- Dimensions: 0.31 x 0.1 in. (W x H)

## COMPLIANCE & REGULATORY APPROVALS

### Safety

- UL Listed 2108 Low Voltage Lighting System / Low Voltage Luminaire. UL 1598 / CSA 250.0-08, UL 8750. UL 879 / CAN/CSA-C22.2 no. 207-M89. Certified for United States and Canada. File # E469769.
- UL Listed Field Cuttable.
- UL Recognized Component - Sign Accessories. Available in UL Sign Components Manual (SAMS Manual). File # E469770.

### Performance

- LED chip data measured in accordance to IES LM-80-08.
- Photometric & Colorimetry data measured in accordance to IES LM-79-08, in Elemental LED's Innovation Lab.

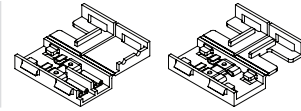
## COMPATIBLE SWITCHES, CONTROLS, LED DRIVERS, & SYSTEM DIAGRAMS CAN BE FOUND AT

[www.DiodeLED.com](http://www.DiodeLED.com)

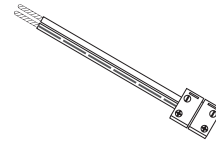
## ADDITIONAL ACCESSORIES

Accessories listed below fully support our Tape Light product line. Further information on these products and more accessories can be found in our latest catalog or online at [www.DiodeLED.com](http://www.DiodeLED.com).

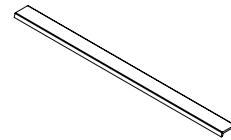
CLICKTIGHT® PRO  
Tape Light Connector



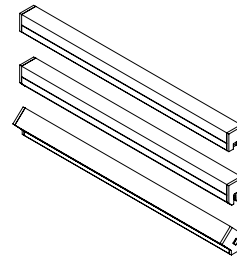
CLICKTIGHT® Tape  
Light Connectors



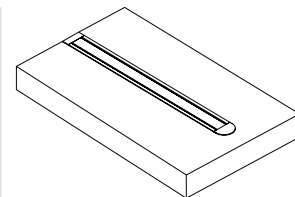
TAPEGUARD® LED  
Light Cover



CHROMAPATH®  
Aluminum Channels



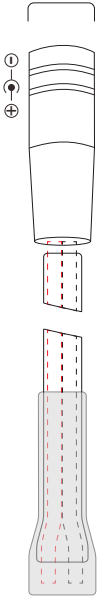
CHROMAPATH® SLIM  
Recessed Channels



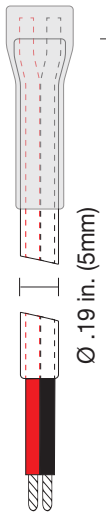
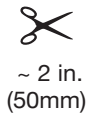
1. Epistar 3528 SMD Chip binning ranges: (2400K 90+ CRI: 2300-2425K), (2700K 90+ CRI: 2580-2725K), (2850K 90+ CRI: 2725-2870K), (3000K 90+ CRI: 2870-3045K), (3300K 90+ CRI: 3220-3465K), (3500K 90+ CRI: 3465-3710K), (3800K 90+ CRI: 3710-3985K), (4200K 90+ CRI: 3985-4260K), (4400K 90+ CRI: 4260-4503K), (5000K 90+ CRI: 4745-5028K), (6300K 90+ CRI: 6020-6530K).
2. LED chips have a luminous flux range with a tolerance of +/- 5%.
3. Actual efficacy value is dependent to specified LED driver (power supply). An estimated efficacy value can be calculated as follows: Lumen value divided by average power consumption per foot.
4. Ideal tape application temperature range is 70°F to 100°F (21°C to 38°C). Initial tape application to surfaces at temperatures below 50°F (10°C) is not recommended because the adhesive becomes too firm to adhere readily. However, once properly applied, low temperature holding is generally satisfactory.
5. Each maximum run requires a dedicated power feed from the driver. Do not extend beyond the recommended maximum run length.
6. Wire leads and accessories are not rated for in-wall installation unless otherwise noted. Attached wire leads and connections are field-cuttable.
7. Do not install product in an environment outside the listed ambient temperature. Exceeding the maximum ambient temperature may damage LED chips, reduce the total lamp life, lumen output, and/or adversely impact color consistency.
8. Operating temperature is measured according to the minimum and maximum ambient temperature environment.
9. Do not install in environment where LED chips are exposed to direct sunlight as damage to the phosphor will occur.

**MECHANICAL DIAGRAM**

Ø .45 in.  
(11.4mm)

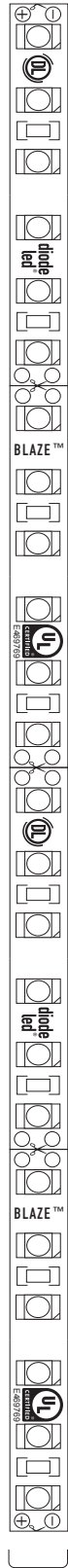


3 ft. (914mm) 20/2 AWG UL 2464 Wire



3 ft. (914mm) 20/2 AWG UL 2464 Wire

Leads:  
Red (+)  
Black (-)



W .31 in.  
(8mm)

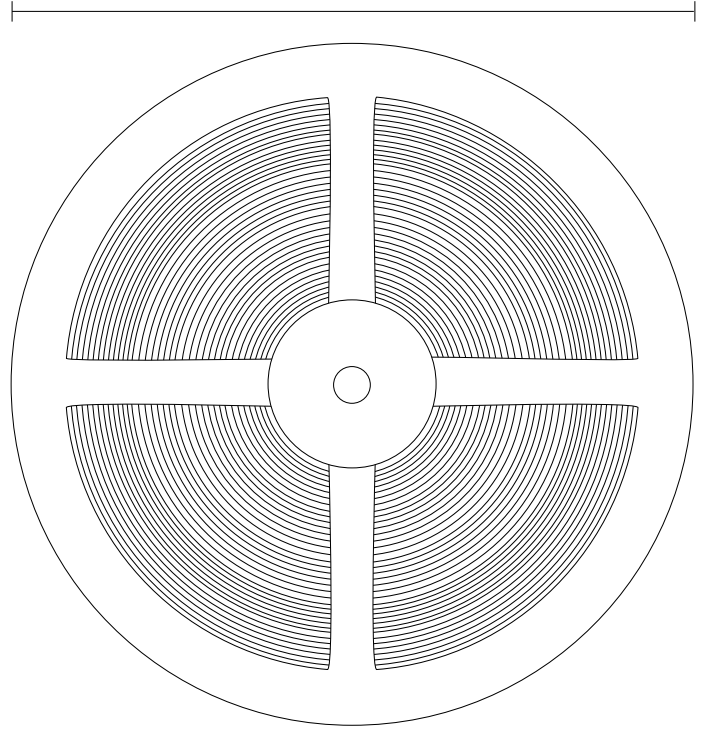
.33 in. (8.3mm)



H .1 in.  
(2.5mm)

**BLAZE™ 400' SPOOL**

36 in.  
(914.4mm)



## ADDITIONAL INFORMATION

- LOW VOLTAGE LED TAPE LIGHT Installation Guide

## SAFETY / WARNINGS / DISCLOSURES

1. Install in accordance with national and local electrical code regulations.
2. This product is intended to be installed and serviced by a qualified, licensed electrician.
3. Only install with a Class 2 DC Constant Voltage LED driver. This product has not been evaluated for use when connected to an LED driver that does not comply with Class 2 voltage and energy limited supplies.
4. Only use copper wiring. Use wires rated for at least 176°F (80°C) and certified for use with external connection of electrical equipment.
5. Each maximum run requires a dedicated power feed from the driver. Do not extend beyond the recommended maximum run length.
6. Tape light, attached wire leads, and additional extension cables, connectors, etc., are not rated for in-wall installation unless otherwise noted. Tape light and attached wire leads are field-cuttable.
7. Ensure applicable wire is installed between driver, fixture, and any controls in-between. When choosing wire, factor in voltage drop, amperage rating, and type (in-wall rated, wet location rated, etc.). Inadequate wire installation could overheat wires, and cause fire.
8. Do not install in environment where LED chips are exposed to direct sunlight as damage to the phosphor will occur.
9. Do not install in environment where excessive heat may exist (ex. close proximity to fireplace, etc.) See Ambient Temperature ratings
10. Do not install indoor LED tape light products in outdoor / wet location environments. Only wet location tape light models are rated for outdoor / wet locations.
11. Do not modify product beyond instructions or warranty will be void.
12. Tape light must be handled with care. Excessive handling, bending, and pressure may damage the product, voiding the warranty.
13. Actual color may vary from what is pictured on this sheet and other print materials due to the limitations of photographic processes.
14. We reserve the right to modify and improve the design of our fixtures without prior notice. We cannot guarantee to match existing installed fixtures for subsequent orders or replacements in regards to product appearance, CCT, or lumen output.

## WARRANTY

### Limited Warranty

This product has a twelve (12) year limited warranty from the date of shipment. This warranty does not include the additional accessories referenced in this specification sheet. Complete warranty details for fixtures and additional accessories are available at [www.diodeled.com/limited-warranty/](http://www.diodeled.com/limited-warranty/) within the Policies section. For warranty related questions please contact product support.

### Consumer's Acknowledgment

Elemental LED, Inc. stands behind its products when they are used properly and according to our specifications. By purchasing our products, the purchaser agrees and acknowledges that lighting design, configuration and installation is a complex process, wherein seemingly minor factors or changes in layout and in-field adjustments can have a significant impact on an entire system. Choosing the correct components is essential. Elemental LED is able to work with the original purchaser to make an appropriate product selection to the extent of the limited information that the customer can provide, but it is virtually impossible for Elemental LED to design a system that foresees every unknown factor. For this reason, this Warranty does not cover problems caused by improper design, configuration or installation issues. Any statement from a Elemental LED employee or agent regarding a customer's bill of goods and/or purchase order is NOT an acknowledgment that the products purchased are designed and configured correctly. The purchase agrees and acknowledges that it is the customer's responsibility to adhere strictly to all information contained in the Product Specification Sheets.

There is often more than one way to design, configure and layout an LED lighting application properly to achieve the same lighting effect. Elemental LED strongly recommends that licensed professionals be used in the design and installation of lighting systems that include Elemental LED products. The specifications include important information that a designer and installer should carefully review and strictly follow. Qualified designers and certified and/or licensed installers, with access to the final installation environment, customer goals, and Elemental LED product specifications can make the requisite decisions appropriate for a successful finished lighting application.

